

Gainsborough continues to evolve its offering of pull handles to include various sizes, opening configurations and styles. Pull handles are available in 300mm, 370mm, 450mm, 520mm, 600mm, 750mm, 900mm and 1800mm lengths in an impressive array of styles. Pull handles are available as single fix or back to back sets, making them an ideal entrance solution for commercial and residential applications.

**370mm and 520mm Pull Handles****370mm Pull Handle Sets****600mm Pull Handles****750mm Pull Handles****1800mm Pull Handles**

Pull Handles

370mm and 520mm

GAINSBOROUGH

Architectural HARDWARE



Horizon Pull Handle

Complements Horizon Lever design

- Suits 35 - 50mm thick doors
- Concealed fix - back to back
- Visible fix - single fix


9648PH370

- 300mm length - centre to centre
- 370mm length - end to end
- 55mm - Stand off from face of door

9648PH520

- 450mm length - centre to centre
- 520mm length - end to end
- 60mm - Stand off from face of door
- Visible fix single side

CP SC

 5/10 years

- Sold as single units (order 2 units for back mounting)



Senator Pull Handle


Complements Senator Lever design

- Suits 35 - 50mm thick doors
- Concealed fix - back to back
- Visible fix - single fix

9963PH370

- 300mm length - centre to centre
- 370mm length - end to end
- 55mm - Stand off from face of door

CP SC

 5/10 years

- Sold as single units (order 2 units for back mounting)

Pull Handle Sets

- Shown below are examples of Linear, Horizon and Senator Pull Handles combined with matching leverset, 755 series mortice lock and key escutcheons to suit exterior door applications.
- Door is opened from exterior by retracting latchbolt with key; or from interior by retracting latchbolt with lever. Operate key to throw deadbolt. (Part numbers for pull handle sets are detailed.)

Back to Back Pull Handle Set



Horizon Pull Handle Set

9648PHSET370

Contents:

- 9648PH370
Horizon 370mm Pull Handle
- Z5R48
Horizon Leverset on 55mm Round Rosettes (inside of door)
- 755SC60
Mortice Lock
- Z5REEU
Key Escutcheons (2)

CP SC

5/10 years

Senator Pull Handle Set

9963PHSET370

Contents:

- 9963PH370
Senator 370mm Pull Handle
- Z5S65
Senator Leverset on 58mm Square Backplates (inside of door)
- 755SC60
Mortice Lock
- Z5SEEU
Key Escutcheons (2)

CP SC

5/10 years

Horizon Back To Back Set

9648BBSET370

Contents:

- 9648PH370
Horizon 370mm Pull Handle x 2
- 775SC60
Mortice Lock
- Z5REEU
Key Escutcheons (2)
- PT775/SPEIL SSS
- PT775/SPEIR SSS

CP SC

5/10 years

- The Horizon pull handle sets are available as singles in both 370 and 530mm lengths. Part numbers for 520mm are 9613PH520CP 9613PH520SC

- The Horizon pull handle design is also available as a back to back pull handle set with roller bolt mortice lock and accessories.
- The Horizon pull handle set features two 370mm length Horizon pull handles, roller bolt mortice lock, two key escutcheons and accessories. Please refer to detail above.

Pull Handles

600mm Stainless Steel

Pull Handle Sets

- Featuring 316 grade stainless steel for higher corrosion resistance and durability.
- Fixing : each product comprises a single pull handle with all the relevant screws and accessories for single fix-visible; or single fix-concealed; or back to back fixing. Note: For back to back fixing, please order 2 handles.
- Choose from an impressive array of handles, including the Horizon, Curved, Styled, and Oblong designs, all 600mm in length.



600mm Horizon Pull Handle

9248PH600

- Includes: screws for single fix – visible; single fix – concealed; or back to back fixing* (order 2 units for back to back fixing)
- 450mm length – centre to centre.
- 600mm length – end to end.
- 25mm diameter.
- 70mm stand off from door face.

SS

🕒 5/10 years



600mm Oblong Pull Handle

9266PH600

- Includes: screws for single fix – visible; single fix – concealed; or back to back fixing* (order 2 units for back to back fixing)
- 580mm length – centre to centre.
- 600mm length – end to end.
- 40mm wide; 20mm deep.
- 65mm stand off from door face.

SS

🕒 5/10 years



600mm Styled Pull Handle, left-handed

9281PHL600

- Includes: screws for single fix – visible; single fix – concealed; or back to back fixing* (order 2 units for back to back fixing – 1 left-handed, 1 right-handed)
- 450mm length – centre to centre.
- 600mm length – end to end.
- 25mm diameter.
- 70mm stand off from door face.


SS

🕒 5/10 years

**600mm Styled
Pull Handle, right-handed****9281PHR600**

- Includes: screws for single fix – visible; single fix – concealed; or back to back fixing* (order 2 units for back to back fixing – 1 left-handed, 1 right-handed)
- 450mm length – centre to centre.
- 600mm length – end to end.
- 25mm diameter.
- 70mm stand off from door face.


SS

 5/10 years

**600mm Curved
Pull Handle****9282PH600**

- Includes screws for single fix – visible; single fix – concealed; or back to back fixing (order 2 units for back to back fixing)
- 3000mm length – centre to centre.
- 600mm length – end to end.
- 25mm diameter.
- 90mm stand off from door face.

SS

 5/10 years

Pull Handles

750mm Stainless Steel

750mm Pull Handles

- Featuring 316 grade stainless steel for higher corrosion resistance and durability.
- Fixing: each product comprises a single pull handle with all the relevant screws and accessories for single fix-visible; or single fix-concealed; or back to back fixing.
- Choose from the 750mm length Horizon Pull Handle or the Oblong Pull Handle design.

Note: For back to back fixing, please order 2 handles.




750mm Horizon Pull Handle

9248PH750

- 540mm length – centre to centre.
- 750mm length – end to end.
- 25mm diameter.
- 65mm stand off from door face.

SS

 5/10 years




750mm Oblong Pull Handle

9266PH750

- 729mm length – centre to centre.
- 750mm length – end to end.
- 40mm wide, 20mm deep.
- 65mm stand off from door face.

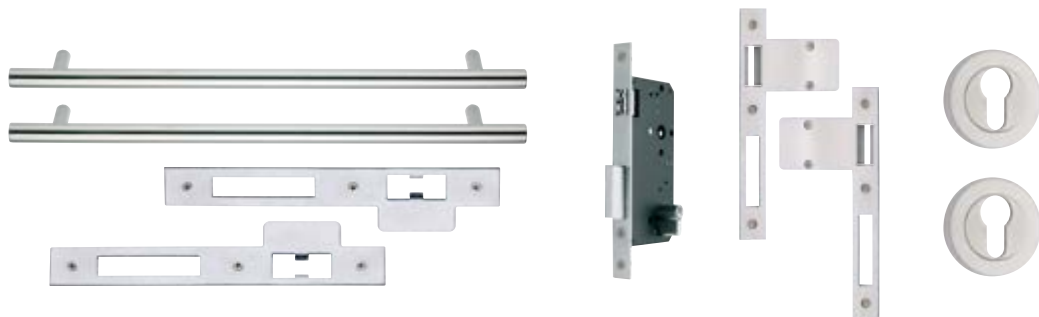
SS

 5/10 years

750mm Pull Handle Sets

- The Gainsborough 750mm Horizon Pull Handle Set includes the 750mm Horizon back to back pull handles complete with roller bolt mortice lock, key escutcheons and left and right-handed extended strike plates. The extended strike plates are included as an accessory for pivot door applications.
- (Standard left and right-handed strike plates are also included with the 775 roller bolt).
- Suits 35mm-50mm thick doors.
- Double or single acting function.
- Concealed fix – back to back.
- Roller bolt holds door closed but not locked.
- Lock or unlock deadbolt with key from inside or outside.

750mm Horizon Pull Handle Set is available in Stainless Steel only, however the 775SC60 Roller Bolt mortice lock is finished in Satin Chrome, as listed below.



750mm Pull Handle Set

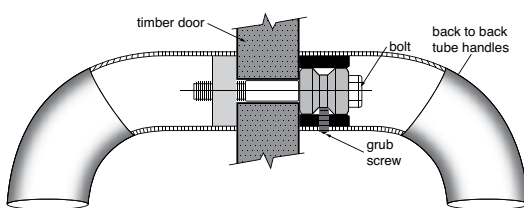
9248BBSET750

Contents:

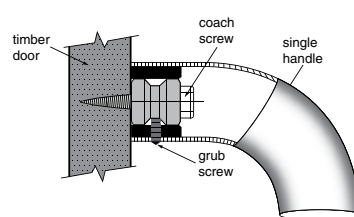
- **9248PHBB750**
750mm Horizon Pull Handles (2) – back to back
- **775SC60**
Roller Bolt Mortice Lock with standard left or right-handed strike plates
- **Z5REEU**
Key Escutcheons (2)
- **PT775/SPE1L**
Extended Strike Plate
– left-handed
- **PT775/SPE1R**
Extended Strike Plate
– right-handed

SS

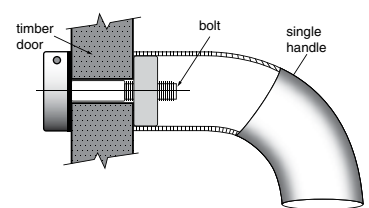
5/10 years



Back to back "BB"



Single fix (Concealed) "SFC"



Single fix "SF"